

LOCATION DETAILS OF THE PROJECTS

**SITE PLAN AT K.M.C. PREMISES NO. 91,
KAMDAHARI PURBA PARA IN WARD NO - 111,
OF BOROUGH- XI, P.S- BANSDRONI ,
KOLKATA - 700084.**

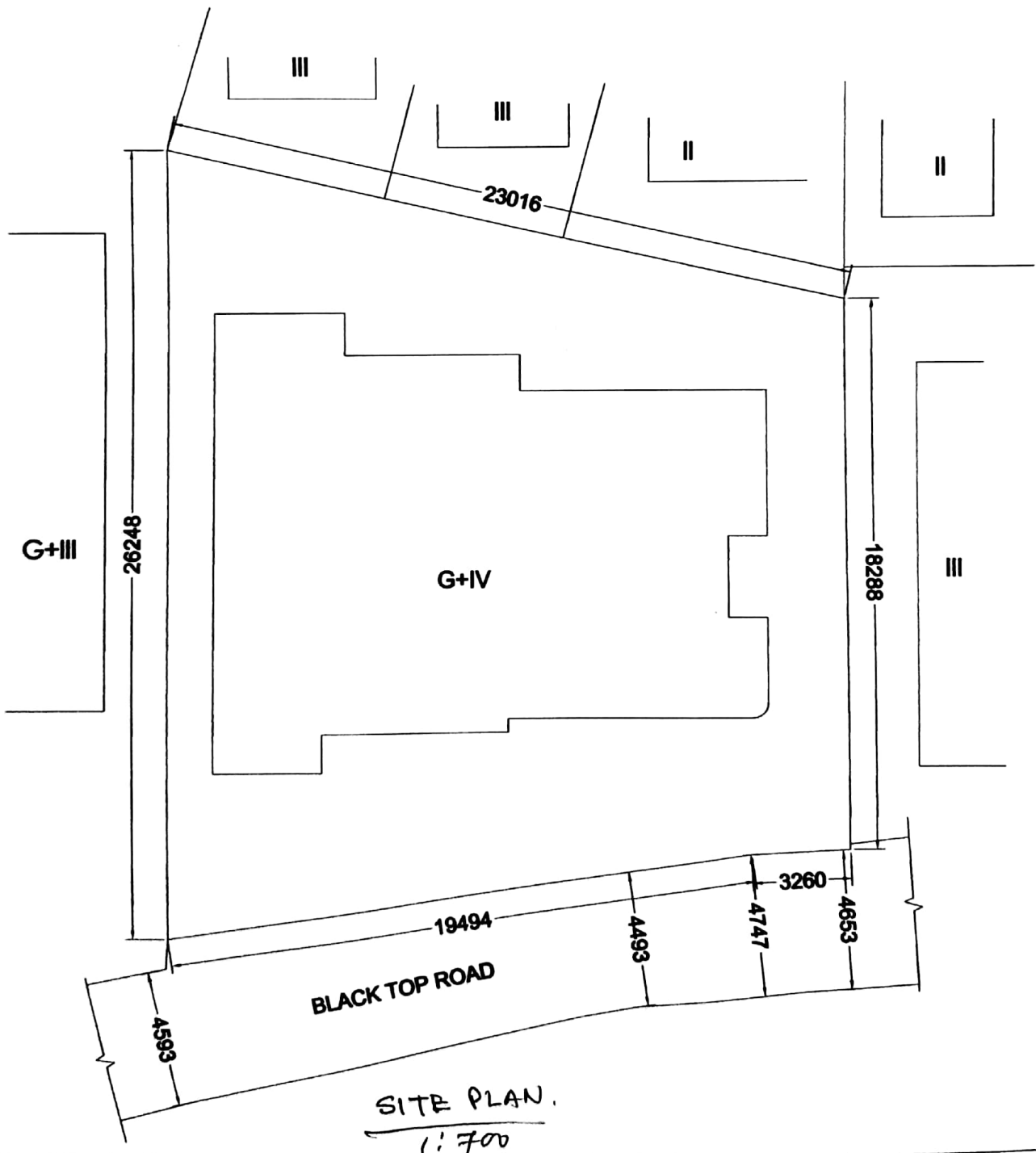
AREA OF LAND :-

AS PER DEED (7K- 8CH-00SFT.) :- 501.672 SQM.
 AS PER BOUNDARY DECLARATION :- 498.194 SQM.
 TOTAL BUILT UP AREA :- 1098.29 SQM.
 TOTAL CARPET AREA :- 806.074 SQM.
 NUMBER OF APARTMENT :- ONE
 NUMBER OF COVERED CAR PARKING :- SIX

CO-ORDINATES OF BOUNDARY LINE

	LATITUDE	LONGITUDE
1	22° 27' 46.09" N	88° 22' 34.49" E
2	22° 27' 45.92" N	88° 22' 34.98" E
3	22° 27' 45.56" N	88° 22' 34.75" E
4	22° 27' 45.79" N	88° 22' 34.32" E

SCALE :- 1:200



LOCATION DETAILS OF THE PROJECT :-

SITE PLAN OF G+IV STOREYED RESIDENTIAL BUILDING PLAN OF PHARMA INDIA PVT.LTD.

13A ST. GEORGE TERRACE IN DAG NO.- 1822,1752,1753, 1754,1824. KHAITAN NO.- 631,46,101,650,57,46. J.L. NO.-92 MOUZA- RASPUNJA, TOUZI NO.- 351, WITHIN RASPUNJA GRAMPANCHAYET. P.S.- BISHNUPUR, UNDER SOUTH 24 PGS, ZILLA PARISHAD.

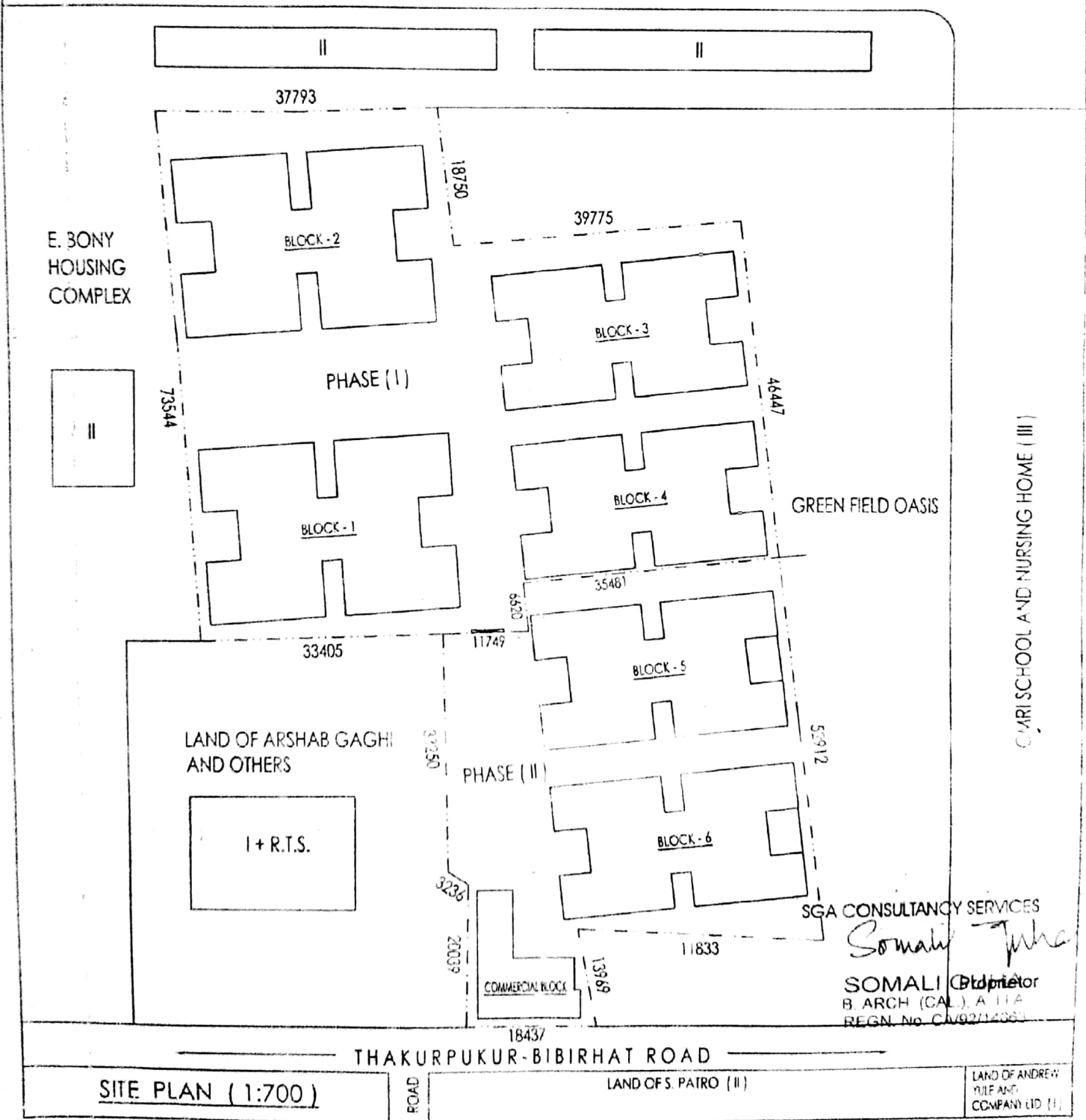
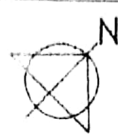
CO-ORDINATES OF BOUNDARY LINE OF PHASE (I) :-

	LATITUDE	LONGITUDE
1.	22° 26' 23.9" N	88° 16' 45.9" E
2.	22° 26' 25.9" N	88° 16' 47.8" E
3.	22° 26' 23" N	88° 16' 48.2" E
4.	22° 26' 25.2" N	88° 16' 49.4" E

CO-ORDINATES OF BOUNDARY LINE OF PHASE (II) :-

	LATITUDE	LONGITUDE
1	22° 26' 24" N	88° 16' 48.8" E
2	22° 26' 25.2" N	88° 16' 49.4" E
3.	22° 26' 25" N	88° 16' 50.8" E
4.	22° 26' 24.4" N	88° 16' 51.4" E

LAND AREA OF PHASE (I) :- 4693.690 SQ.M.
LAND AREA OF PHASE (II) :- 2399.240 SQ.M.



SITE PLAN (1:700)

LOCATION DETAILS OF THE PROJECTS

**SITE PLAN AT K.M.C. PREMISES NO. 91,
KAMDAHARI PURBA PARA, WARD NO - 111,
BOROUGH- XI, P.S- BANSDRONI ,
KOLKATA - 700084.**

CO-ORDINATES OF BOUNDARY LINE

	LATITUDE	LONGITUDE
1	22° 27' 46.09" N	88° 22' 34.49" E
2	22° 27' 45.92" N	88° 22' 34.98" E
3	22° 27' 45.56" N	88° 22' 34.75" E
4	22° 27' 45.79" N	88° 22' 34.32" E

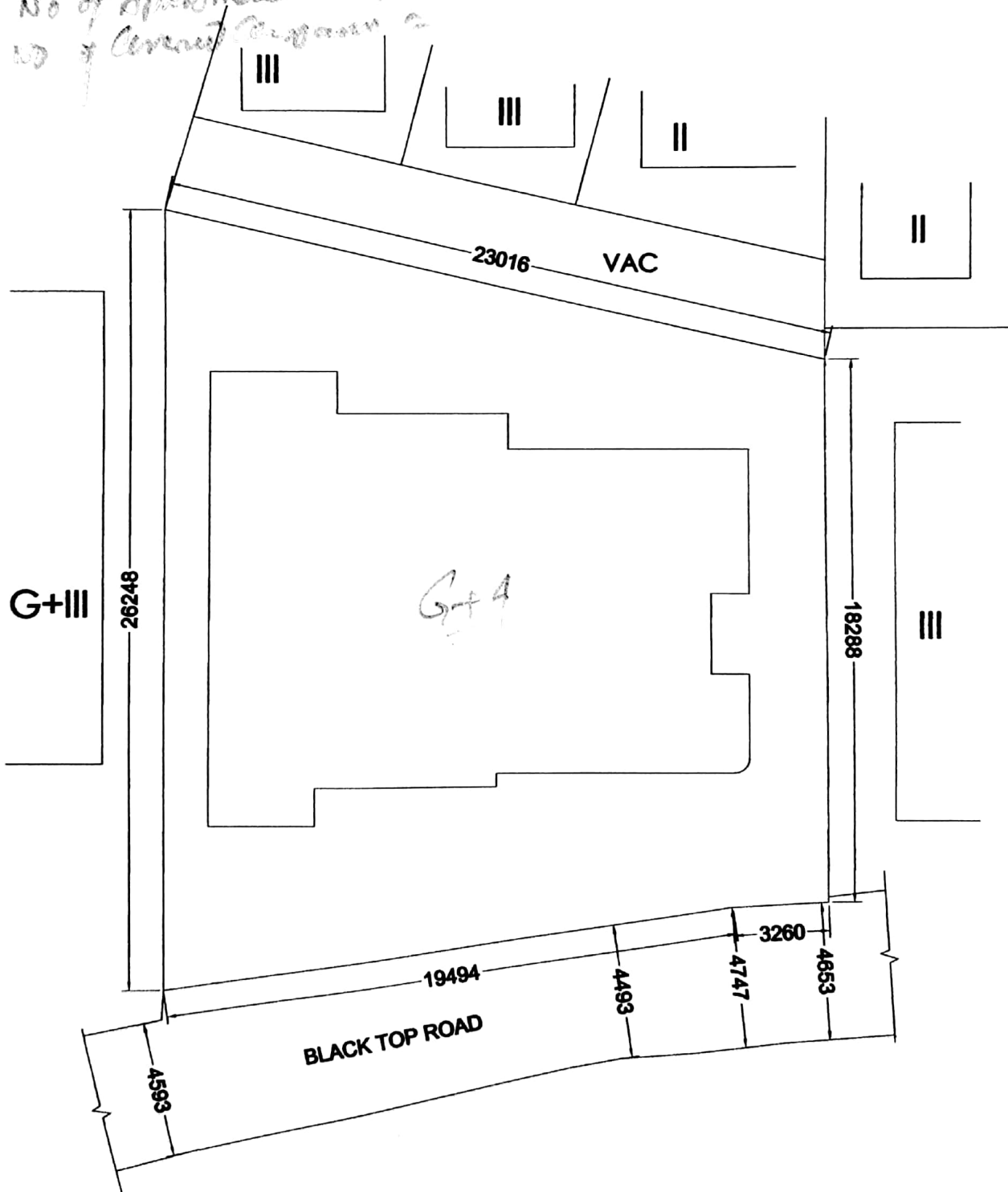
AREA OF LAND :-

AS PER DEED (7K- 8CH-00SFT.) :- 501.672 SQM.
AS PER BOUNDARY DECLARATION :- 498.194 SQM.

SCALE :- 1:200



*Total Built up area =
Total Carpet area
No of Apartment = 1 No
No of Cement Program =*



LOCATION DETAILS OF THE PROJECTS

**SITE PLAN AT K.M.C. PREMISES NO. 91,
KAMDAHARI PURBA PARA IN WARD NO - 111,
OF BOROUGH- XI, P.S- BANSDRONI,
KOLKATA - 700084.**

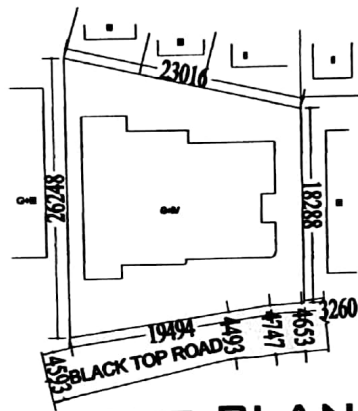
CO-ORDINATES OF BOUNDARY LINE

	LATTITUDE	LONGITUDE
1	22° 27' 46.09" N	88° 22' 34.49" E
2	22° 27' 45.92" N	88° 22' 34.98" E
3	22° 27' 45.56" N	88° 22' 34.75" E
4	22° 27' 45.79" N	88° 22' 34.32" E

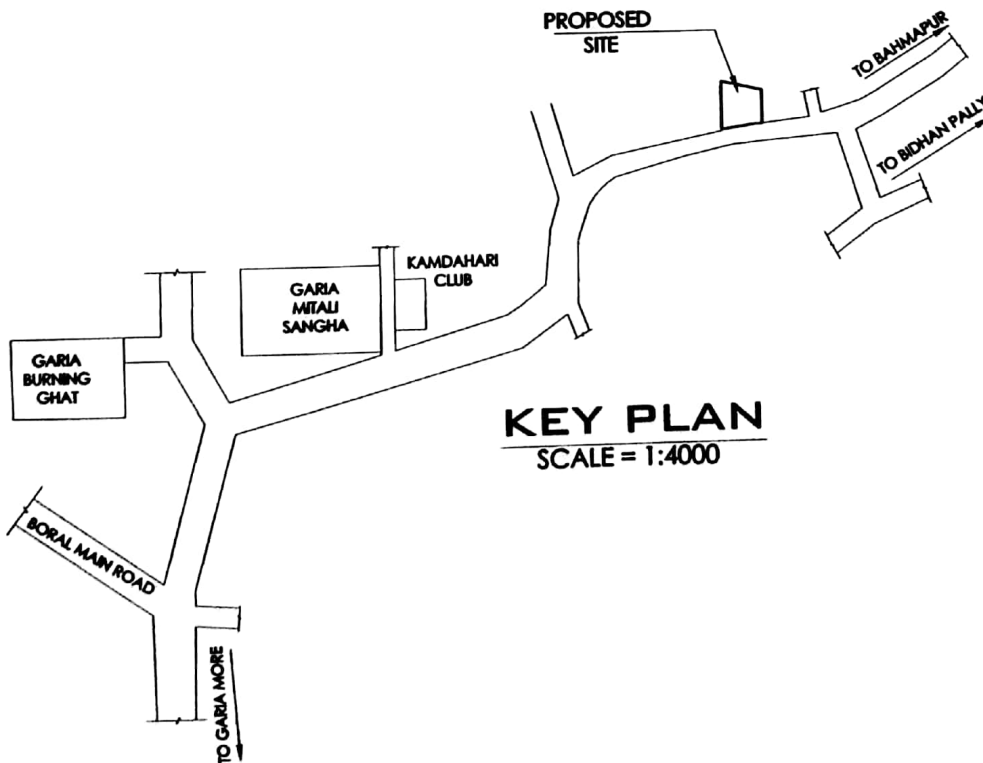
AREA OF LAND :-

AS PER DEED (7K- 8CH-00SFT.) :- 501.672 SQM.
 AS PER BOUNDARY DECLARATION :- 498.194 SQM.
 TOTAL BUILT UP AREA :- 1098.29 SQM.
 TOTAL CARPET AREA :- 806.074 SQM.
 NUMBER OF APARTMENT :- ONE
 NUMBER OF COVERED CAR PARKING :- SIX

SCALE :- 1:200



SITE PLAN
SCALE = 1:700



KEY PLAN
SCALE = 1:4000